

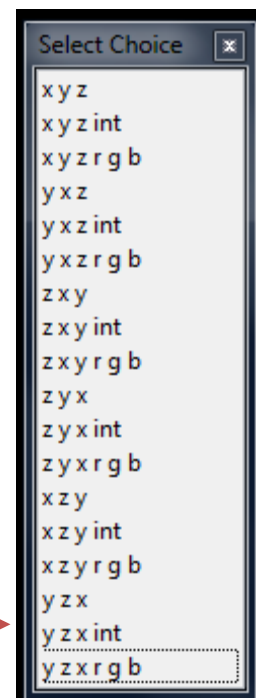
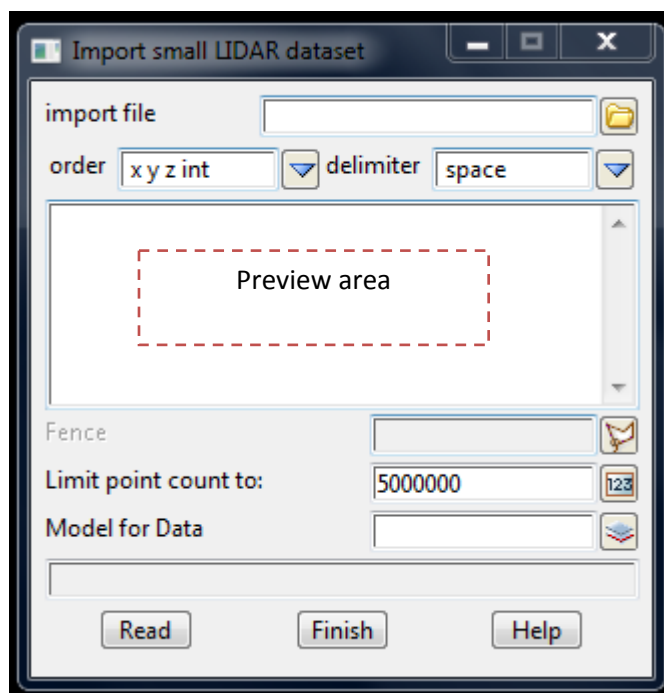
## **Import Scan data points (LIDAR or terrestrial)**

This option will attempt to import LIDAR points and colour them by their grey scale intensity value or RGB values.

The FENCE is used during the import to limit what points are imported. The shape of the fence string can be any complex shape.

Import speed is directly related to XYZ files size. The Fence size is not as critical performance issue. Meaning 800Mb file will still take 4mins to import even if the Fence is very small.

Import file can be either space, comma, tab or semi-colon delimited ascii file. After selecting a file the first 5 lines are read into the preview box to show user what type of data they are importing. It might not always be possible to open large ascii files in notepad to preview them and more importantly this is very slow on 3+Gb files. The preview is a check on the suppliers metadata about their deliverables. If you chose a space delimited import and the file is comma delimited you will get no points.



### **ORGER**

Coordinate order can be one of the following:

### **DELIMITER**

Space, Comma, Tab or Semi-Colon

### **FENCE**

Is a polygon limit for the area to be imported.

### **LIMIT points**

Maximum number of points to import.

(note: 32-bit V9 version can only handle around 5million points. Import may cause total number of point in a project to go beyond this limit and may crash 12d software)

### **Model for Data**

Model name to create LIDAR points